

The following technical rider corresponds to an ideal situation, which can be altered and adapted to the current venue.

**1. TOURING COMPANY**            5 performers  
   1 light technician  
   1 tourmanager

**2. DURATION**                    +/- 80 minutes: 2 parts of 30 minutes + break in between of 15 à 20 minutes.

### **3. STAGE**

- Normally we play in a black box set-up. Whether we'll need full masking or not depends on the theater and has to be decided the day of set-up with the company's technician.
- black dancefloor covering the whole performance area
- the ideal measures of the performance area are min.10m x 10m

Before rehearsals and performances the stage floor should be cleaned.

### **4. LIGHT & SOUND (see plan in attachement)**

### **5. PROPS**

- we need freshly made coffee for the performance
- if possible we bring a table and three chairs, if not it would be nice if the theatre can help us find three chairs and a table. We can send you pictures of the table and chairs we need.

### **6. PLANNING AND CREW TO BE PROVIDED BY THE ORGANIZER**

We need 1 set-up day before the show. Underneath you'll find our standard planning

*day 1 (= day before the show):*

9h - 13h: Install masking, lights, dance floor... Min. 2 light technicians and 1 stage technician.

14h - 18h: Continue set-up, clean stage and focus lights from 16h to 18h. 2 light technicians and 1 stage technician.

18h - ... h: Performers come on stage to space and rehearse. 1 technician stand-by.

*performance day:*

9h - 13h: Finishing lights. 1 light technician

14h - 18h: Rehearsals. 1 technician stand-by.

19h: cleaning stage

... h: PERFORMANCE

## **7. EXTRA**

We need someone from the theater in the audience to announce the break.

During the break the audience has to leave the space.

If there is a bar or foyer next to the space the audience can have a drink there.

If this is not the case we want to see together with someone from the theater how to organize the break.

## **8. DRESSING ROOM AND CATERING**

We need a lockable dressing room for 5 people which should contain showers, toilets, make-up tables with lights and mirrors, clean towels, a refrigerator and clothes-hangers. The following catering would be nice to be provided: water, tea, coffee, fruitjuice, fresh fruits

In case of several performances in the same place a wardrobe person should wash and iron the costumes. Or acces to a washingmachine and a dryer.

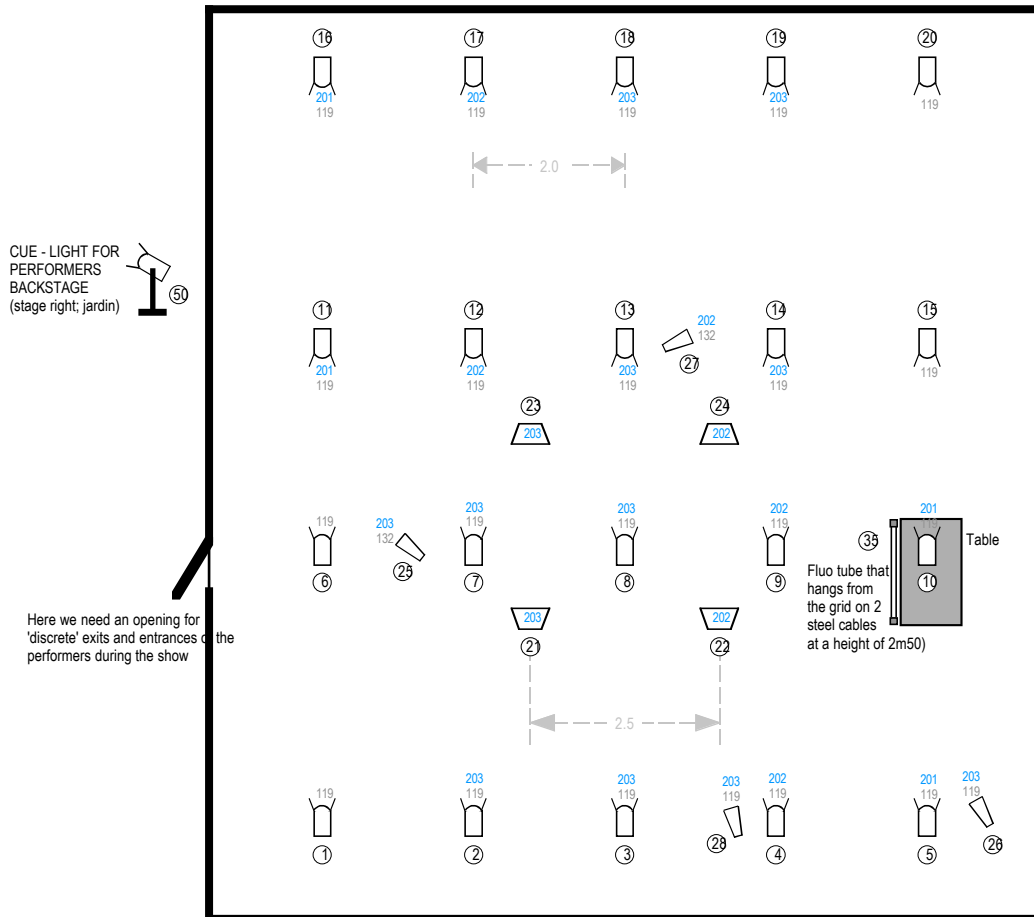
## **9. OTHER**

This technical rider and its annexes form an integral part of the contract. Any problems arising have to be discussed with the company. In case of any problem, please let us know in time, so that we can find a solution suitable for both of us.

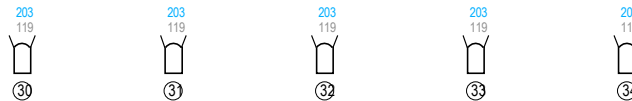
For further information please contact:

Production: Helga Duchamps (helga@duchamps.org - +32 497 45 58 10)

Lights, stage, sound: Jan Van Gijssel (janvg@mac.com)



④ HOUSE LIGHTS



**LIGHT:**

- 25 x PC1kW with barndoors
- 4 x PAR64 CP 60 or CP61
- 4 x Flood (ACP)
- 1 x PC or PAR or Flood or ... on a stand to use as a cue-light
- 1 x Fluo tube (l:1m20, 36W) in a normal standard fitting

35 channels (incl. house lights)

- L201 : 4 x PC1kW
- L202 : 4 x PC1kW / 1 x PAR64 / 2 x Flood
- L203 : 13 x PC1kW / 3 x PAR64 / 2 x Flood
- L210 : 1 x TL (fluo tube of 1m20 long)

- R114 : 1 x TL (fluo tube of 1m20 long)
- R119 : 25 x PC1kW
- R132 : 4 x PAR64

**SOUND:**

We need 1 line (XLR) at the table on stage (downstage left).  
On the table we have our own little active speaker, hidden in a phone.  
No other speakers or monitors are needed

A very basic sound mixer to balance the sound.

Scale: 1/100  
1 meter: 0  1  
lightdesign  
jan.zoo@mac.com