

TROUPEAU +++ Ayelen Parolin

TECHNICAL RIDER

duration of the performance: +/- 45 à 50 minutes
3 performers on stage.

day 1 : set-up stage, light & sound – rehearsals
day 2 : technical adjustments – general - performance

STAGE & SET-UP

* This is a provisional technical rider that gives an overview of set-up, montage and equipment but we will only be able to give the exact information after having received the technical rider of the theatrespace and final adjustments can be done during set-up in the space.

- Black dancefloor covers the entire stage.
- Black curtains for the back- and sidewalls = black box.
- The audience can not sit too close to the dance-area – to be checked with Ayelen Parolin during the set-up

The theater provides :

- minimum stage of 10x10 metres
- black dancefloor to cover the entire space
- black curtains for the walls
- technicians to build the set + 1 technician for the lights and sound during the general and show(s) when the compagnie doesn't bring her own technician.

LIGHT

details see lightplan

The theatre provides :

- technicians to hang the lights + program the lightboard + run the show

SOUND

The company brings two cd's with the music for the piece.

The theatre provides:

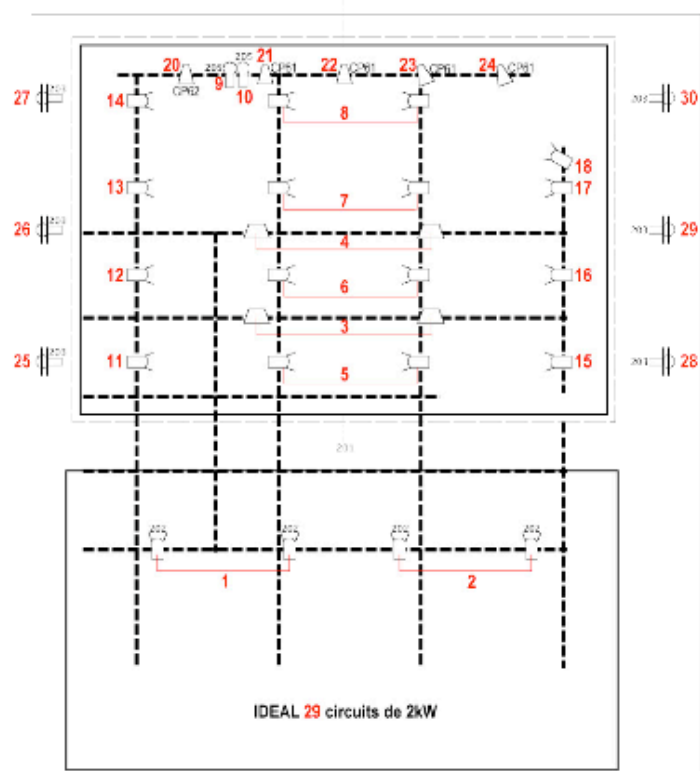
- audiosystem with two cd-players and mixing board, connection for laptop
- number and position of speakers depend on the space : good general sound that covers the entire audience.
- technicians for the set-up

COSTUMES/LOGE

Unless there is only one performance the costumes will have to be washed every day :
washing machine + dryer + ironing board.

Loge with mirrors, showers and towels for 3 performers

Light plan **TROUPEAU** (Ayelen Parolin)



▲ 1 x PAR CP62 1kW, 4 x PAR CP51 1kW

◻ 20 x PC 1kW avec volets

◡ 4 x horizontale 1kW (quartz asymétriques)

⊥ 8 x découpe grand angle (ex. Julial 613SX ou ETC 650W) sur des platines au sol

○ 2 x découpe (ex. Julial 614SX)

TAPIS DE DANSE NOIR

Scale: 1:100
 1 meter 
 lightdas.com
 art@p@mac.com