

SMS AND LOVE +++ Ayelen Parolin

general information: helga duchamps - helga@duchamps.org +32 497 45 58 10

technical information: simon siegmann - siegmann.simon@gmail.com

TECHNICAL RIDER

duration of the performance: +/- 60 minutes

4 performers on stage.

team: 4 performers, 1 technician, (1 tourmanager)

STAGE & SET-UP

* This is a provisional technical rider that gives an overview of set-up, montage and equipment but we will only be able to give the exact information after having received the technical rider of the theatre space and final adjustments can be done during set-up in the space.

We need a black box with black curtains on the back and the side of the stage, black dancefloor that covers the whole stage.

A black curtain in front of the stage reduces the frame: we need a black frame to make an opening of 7.50m wide x 3.00 high, hanging at about 5 meters more backwards than the edge of the stage (see drawings in attachment)

All curtains must be stretched to the floor. An exit has to be made stage right.

We need a few pieces of furniture: a white IKEA sofa, a kitchen table (with a formica top of 120x70cm), 3 chairs and 1 stool. 2 big cushions. a small tv bench to put on the television. (see pictures in attachment)

Drinking glasses and other accessories are also part of the setting, they will be provided by the compagnie.

!!!!IMPORTANT!!!!

The stage has to be cleaned thoroughly after every performance.

A grilled chicken is torn to pieces, so quite a lot of greasy stuff to clean up. This does not damage the dancefloor.

COSTUMES/LOGE

Unless there is only one performance the costumes will have to be washed every day: washing machine + dryer + ironing board.

Loge with mirrors, showers and towels for 3 performers. Drinks (tea, coffee, water, orange juice) and snacks (fruits, dried fruits, chocolate, biscuits) in the loge would be nice.

CREDITS

Choreography: Ayelen Parolin

With: François Declercq, Viviana Moin, Leslie Mannès & Ayelen Parolin

Concept light and scenography: Simon Siegmann

Sound and video: Florence Bujard et Joëlle Bacchetta

Artistic feedback: Sara Manente

Production: Helga Duchamps / Duchamps vzw

A creation of Ayelen Parolin in coproduction with le Théâtre Les Tanneurs

Supported by: Ministère de la Communauté française - Service de la Danse and SCAD - 1500 heures pour danser.

Thanks to: Stuk/ Leuven, La Raffinerie, Point Zéro, l'Envers, La Bellone/ Bruxelles

Please use these credits in all communication.

The compagnie also asks to review all texts and info before publishing.

LIGHT

5 x PAR 64 cp62

7 x PAR 64 cp61

10 x PC 1Kw + barndoor + filter holder

7 x PC 2Kw + barndoor + filter holder

10 x Profil 1Kw 50° + shutter

6 x Profil 2Kw 30° + shutter

8 x Cyclo 1Kw

1 x FRESNEL 5Kw + barndoor + filter holder

1 x PC 500w + barndoor + filter holder

1 lighting board with memory

38 channels 2Kw

1 channels 5Kw

SOUND & VIDEO

1 x hand Microphone HF

2 x Micro voice (type SM58)

2 x Microphone stand

1 x Crown GPCC 160

1 x Micro Canon hanging from grid, not standing (see plan)

1 standard FOH (front of house) + SUB

2 speakers in fly (voir plan)

1 x television 70cm diagonal (on stage)

1 x DVD player (on stage)

2 x Di Box (sound dvd to the mixing board)

1 x video camera

1 x videomonitor connected to camera (behind curtain, stage left)

1 x mixing boards with 5 entries and 4 exits (minimum)

1 x CD player.

PLANNING

The number of techniciens is to be decided on in collaboration with the technicien of the compagnie before the arrival in the theatre.

Day 1 :

morning: set-up black box, light, sound, video

afternoon: set-up black box, light, sound, video, fine-tuning lights

evening: Test microphones, setting up light-table, marking dancers

Day 2 :

morning: finishing light tuning, finishing setup black box, correction lights

afternoon: sound balance, technical rehearsal, rehearsals dancers
evening: show

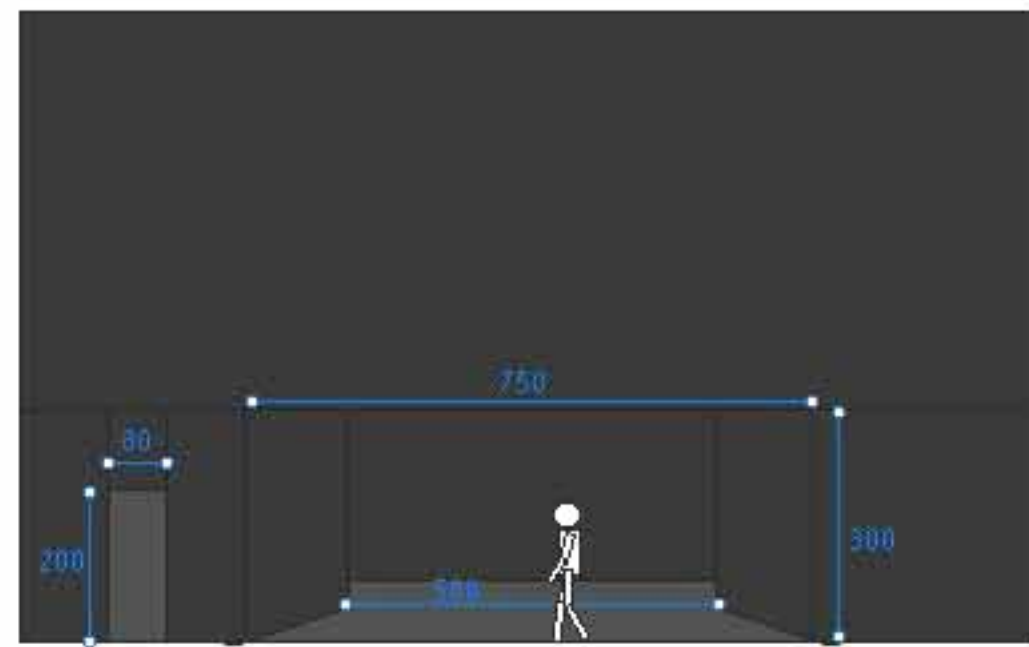
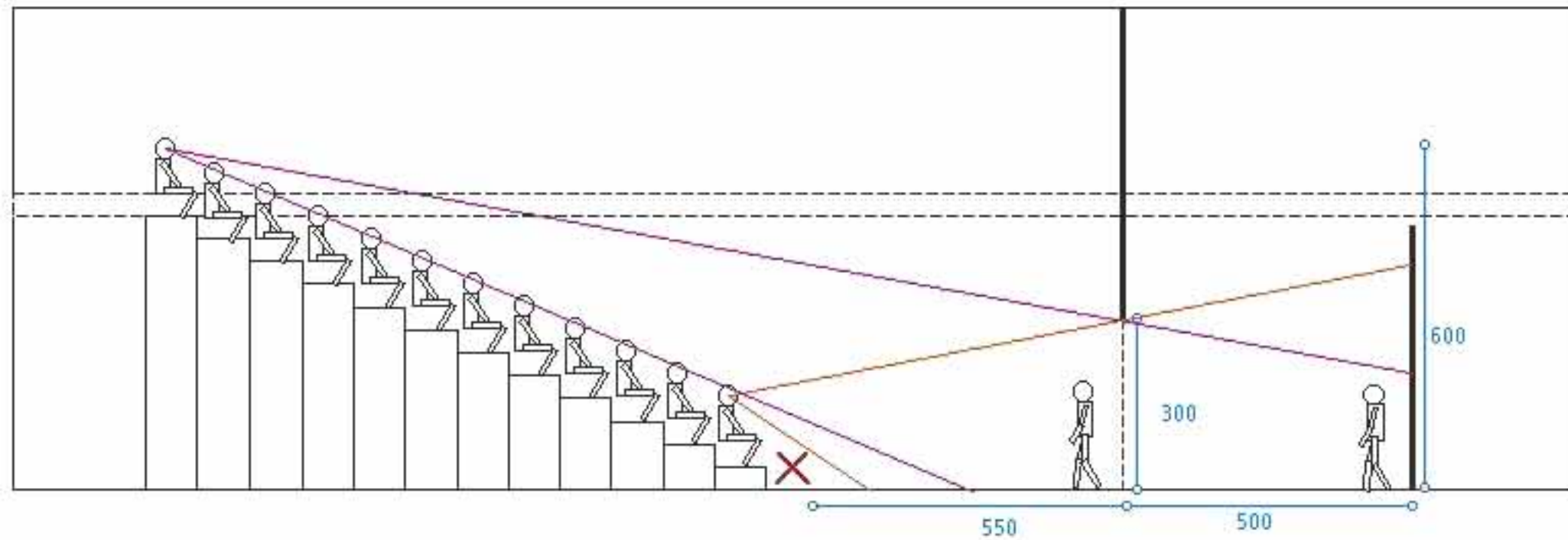
TRANSPORT

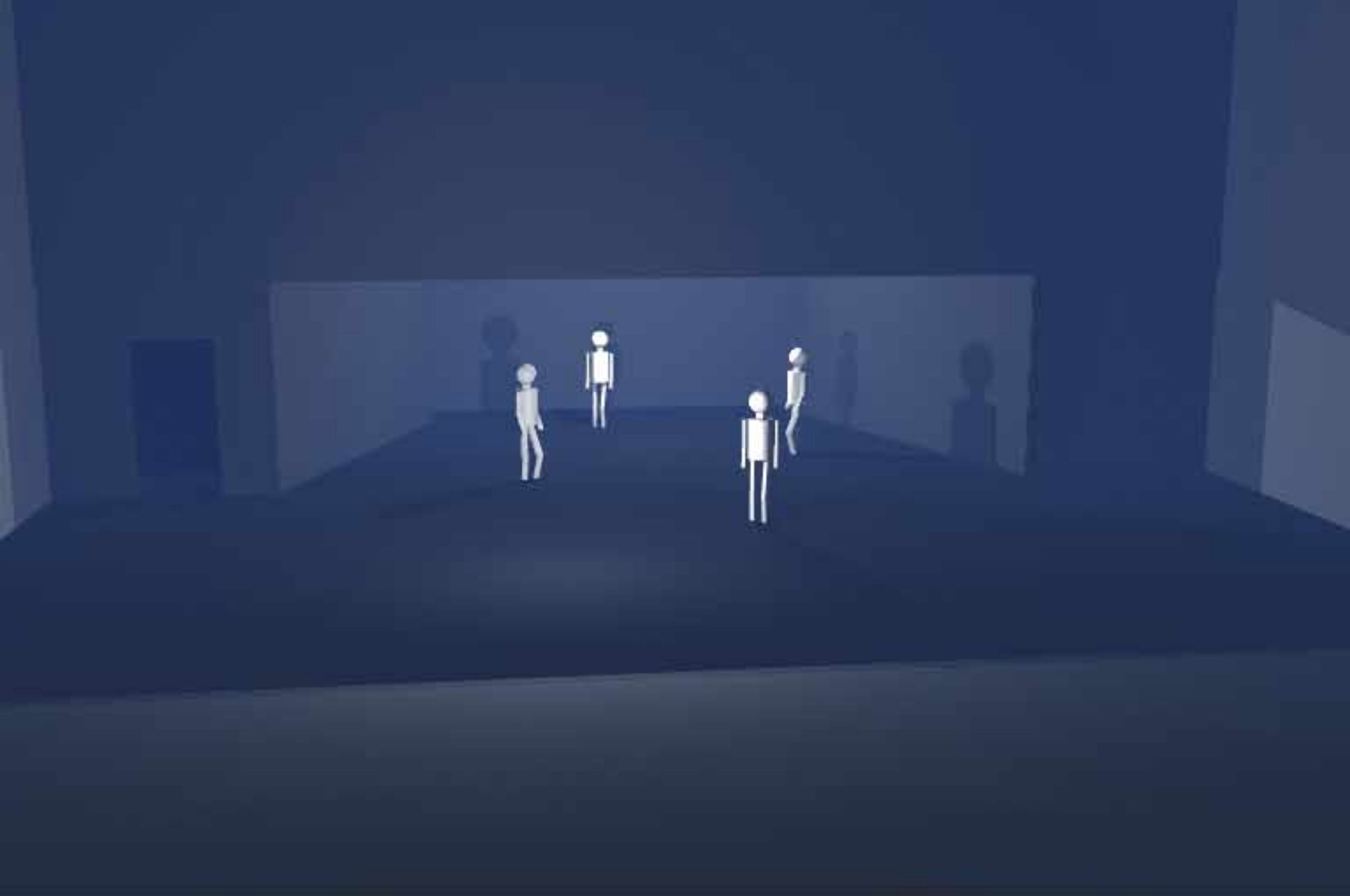
For the furniture: we can either send the furniture by post or special transport. This is possible if there is enough time to send everything.

It is also possible that the theater finds for us the furniture we need: sofa, table, chairs, stool, little tv-bench, cushions. In this case we ask the theatre to send us pictures of the objets so we can be sure that this will work. (see pictures)

SMS & Love

Élévation boîte noire velour

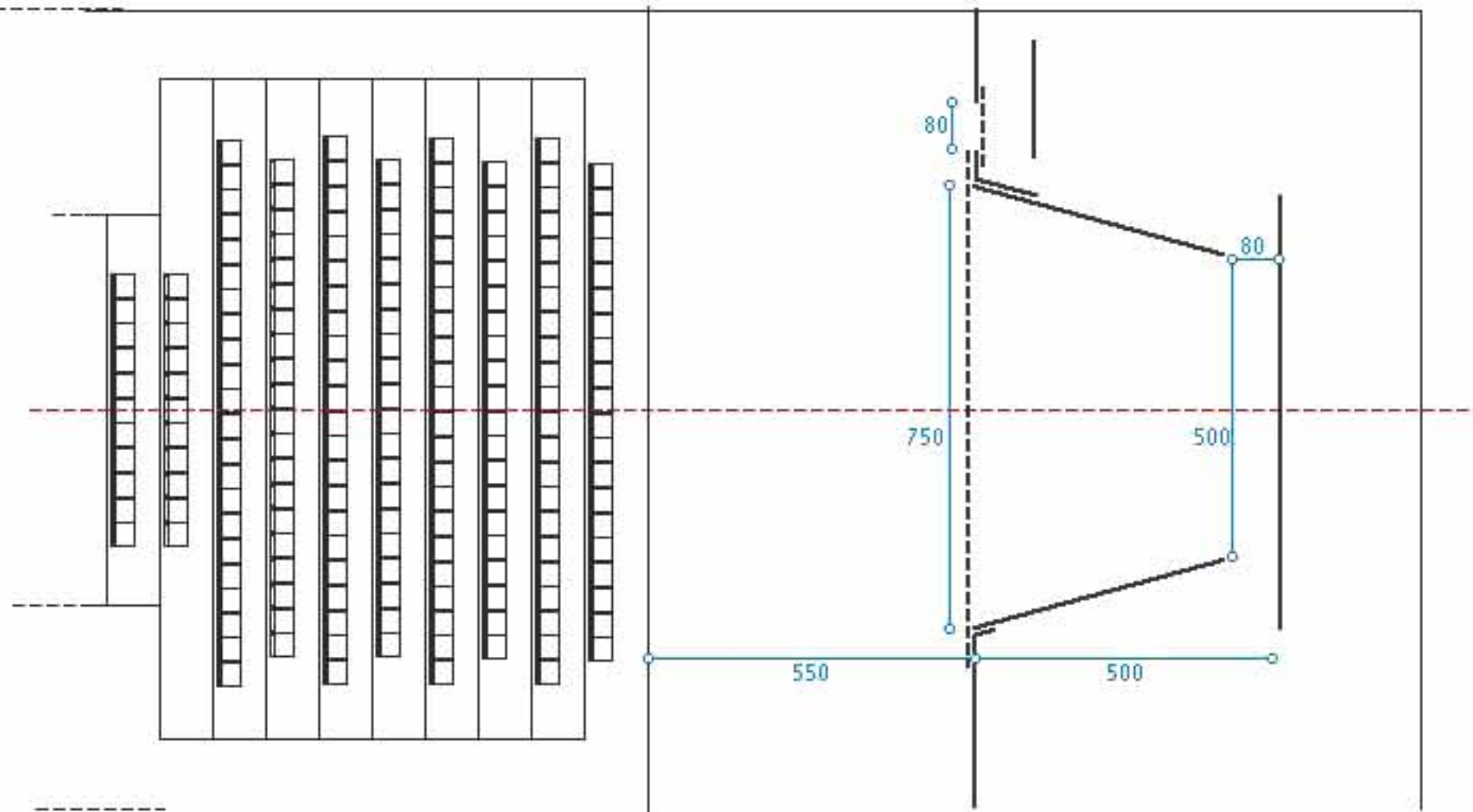




SMS & Love

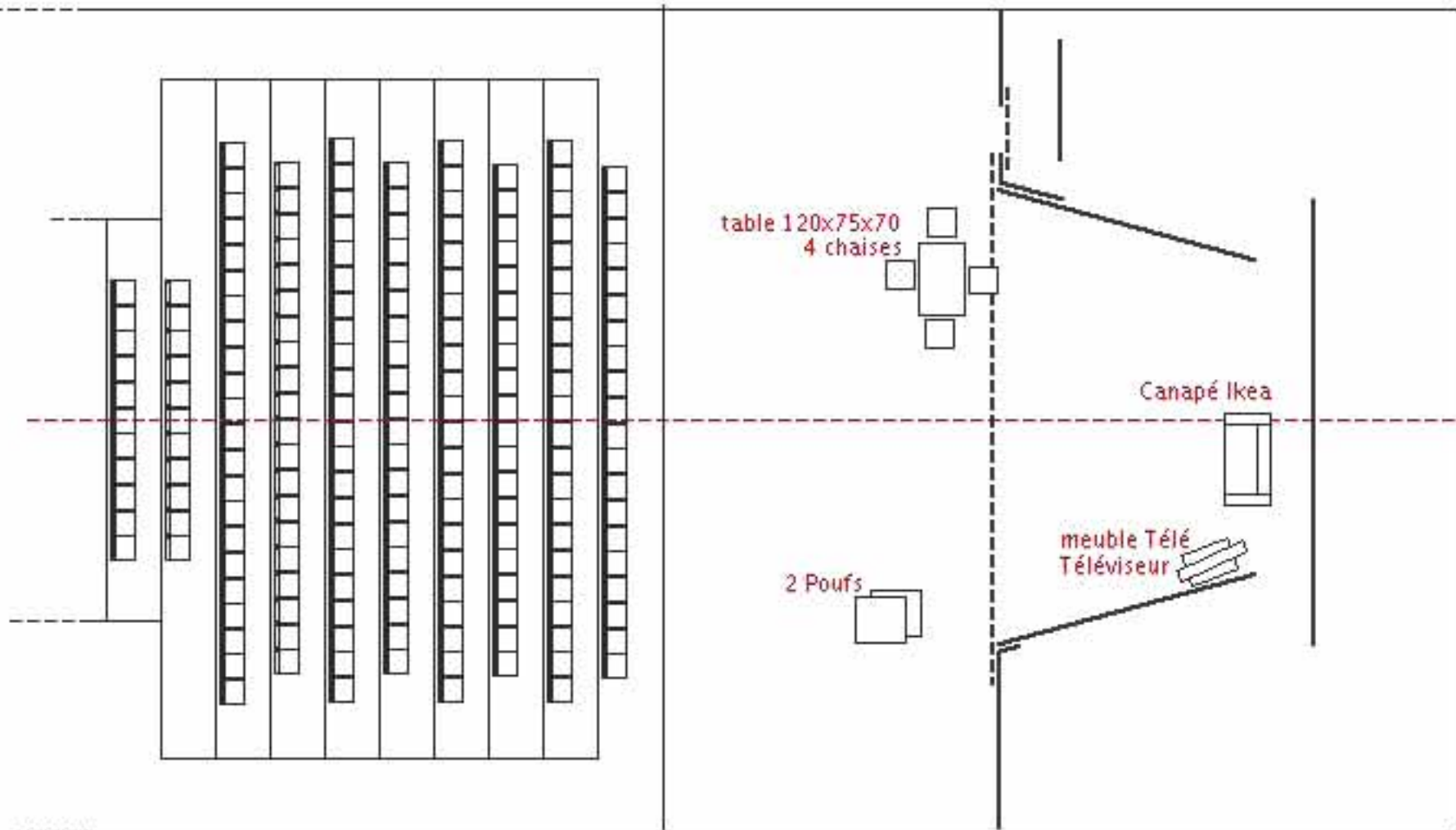
siegmann.simon@skynet.be

Plan boîte noire



SMS & Love

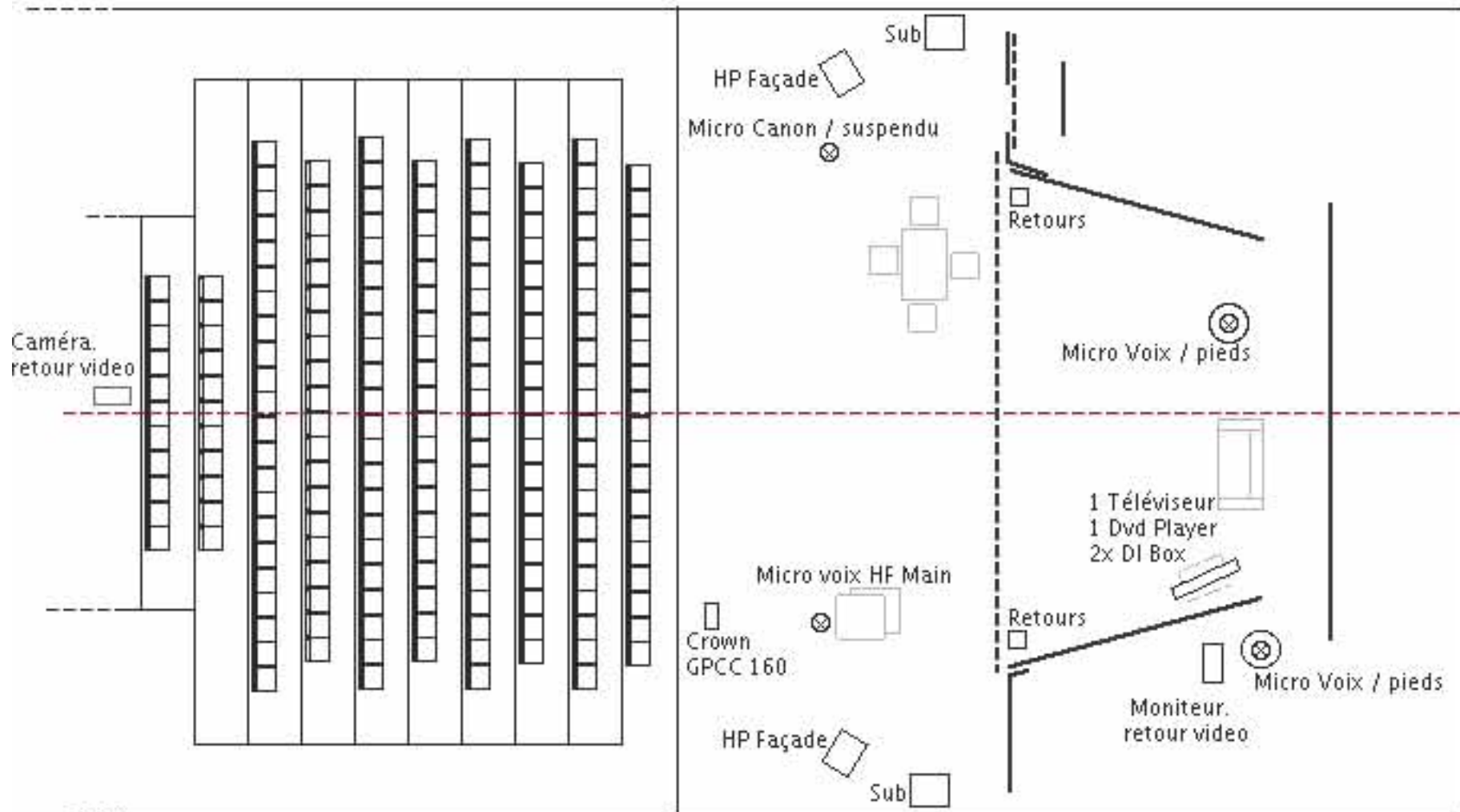
Plan mobilier



SMS & Love

siegmann.simon@skynet.be

Plan son & video

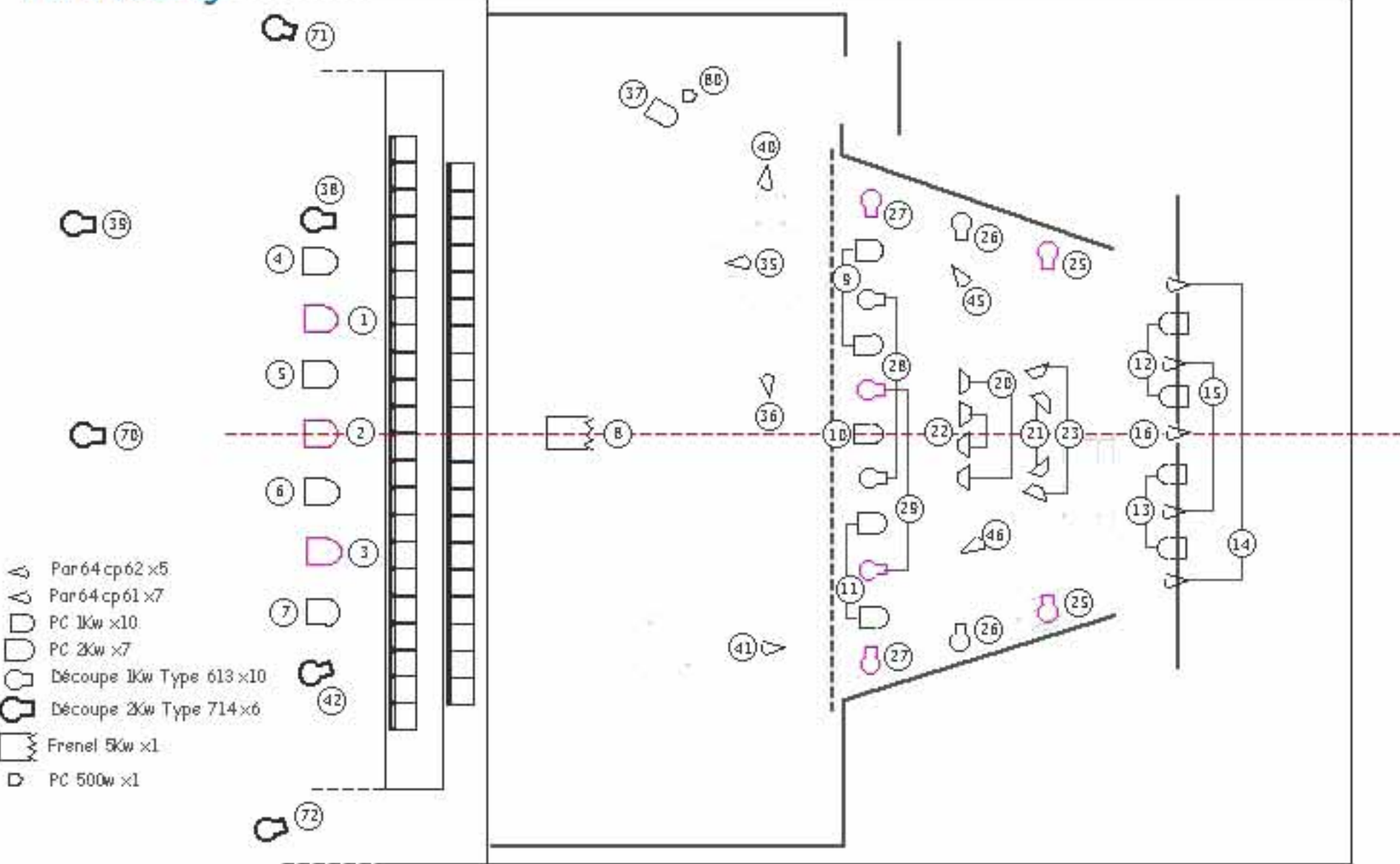


*** Retours Suspendu derrière Arlequin (voir scénø)

SMS & Love

siegmann.simon@skynet.be

Plan d'éclairage



- Par 64 cp 62 x 5
- Par 64 cp 61 x 7
- PC 1kw x 10
- PC 2kw x 7
- Découpe 1kw Type 613 x 10
- Découpe 2kw Type 714 x 6
- Frenel 5kw x 1
- PC 500w x 1

SMS AND LOVE AYELEN PAROLIN

FURNITURE

TABLE: top in formica, size 120x70cm
3 CHAIRS
1 STOOL



2 big cushions



1 TV bench/table



1 SOFA

IKEA model 'Klobo', color white
width: 146 cm depth: 78 cm high: 72 cm

