

# TECHNICAL RIDER (W) arning Carlos Pez

The following technical rider corresponds to an ideal situation, which will be altered and adapted to current venue.

- 1. TOURING COMPANY**            2 performers  
   1 light technician – 1 soundtechnician/subtiteling
- 2. SET-UP TIME**                    one set-up day before the day of the (first) performance
- 3. REHEARSAL**                    in the evening of the set-up day and during day of performance
- 4. DURATION**                    ca. 80min without interval

## 5. STAGE

Before rehearsals and performances the stage floor should be cleaned

Stage                                  black box depends on the theater, has to be decided the day of set-up  
   Black dancefloor  
   The ideal measures of the dance area are min 12m x 12m

Proscenium height                    minimum 6m

- The company brings a construction formed by three shelves (2,20m high) on wheels and a cloth to cover the shelves
- **The Theater has to provide a taburet/podest (ca.1m high), we have to place a little discoball on top of it.**

## 6. LIGHT see annexes!

### a) Lamps and miscellaneous

24 x 1kw PARS 64 CP 62

2 x 1kw ZOOM Profile 15° - 38° on floorstands

12 x 1kw PC with barndoors

15 x dimm. TL´s 1,20m 36W with warm light tubes, splitted on three dimm. plugs

### Filters:

5 x LEE 206 (PC)

6 x LEE 184 (PARS)

6 x LEE 185 (PARS)

6 x LEE 190 (PARS)

6 x LEE 191 (PARS)

15 x LEE 208 (TL´s)

### b) Lighting board and dimmers

48 dimmer pack  
Lightboard with memory and faders

## **7. SOUND**

- 1 small mixing board
- 4 good quality Full-Range Speakers (f.e. D&B C6), two placed in the back of the stage, two placed in the back of the audience
- Enough cables and a separate power line
- 1 cd player placed next to the mixing board
- our laptop has to be connected to the mixing board

## **8. VIDEO**

- 1 good quality beamer, minimum 3000 better 4000 ansilumen, which has to be flown on stage (projection of subtiteling)
- enough cables to connect it with a laptop placed next to the mixing board
- a shutter for the beamer which has to be used manually from the lightboard place
- the beamer has to project on the black backdrop. If this doesn't work we need a screen to project on: to be checked with technician and performers.

## **9. CREW TO BE PROVIDED BY THE ORGANIZER**

set-up: 1 stagehand, 1 sound technician, 2 light technician/lightboard operator, 1 video technician

rehearsal and performance: 1 lighttechnician (lightboard operator), 1 sound/video technician

## **10.DRESSING ROOM AND CATERING**

We need a lockable dressing room for 4 people which should contain showers, toilets, make-up tables with lights and mirrors, clean towels and a refrigerator. The following catering would be nice to be provided: water, tea, coffee, fruitjuice, fresh fruits

In case of several performances in the same place a wardrobe person should wash and iron the costumes. Or acces to a washingmachine and a dryer

## **11. OTHER**

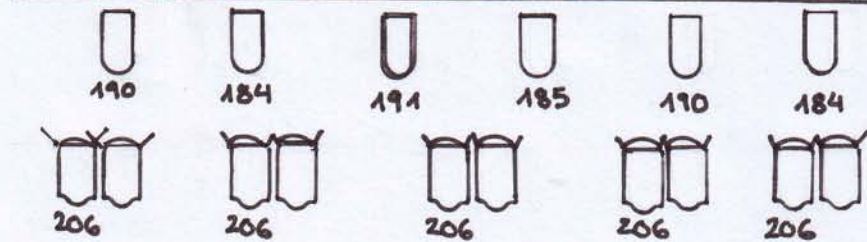
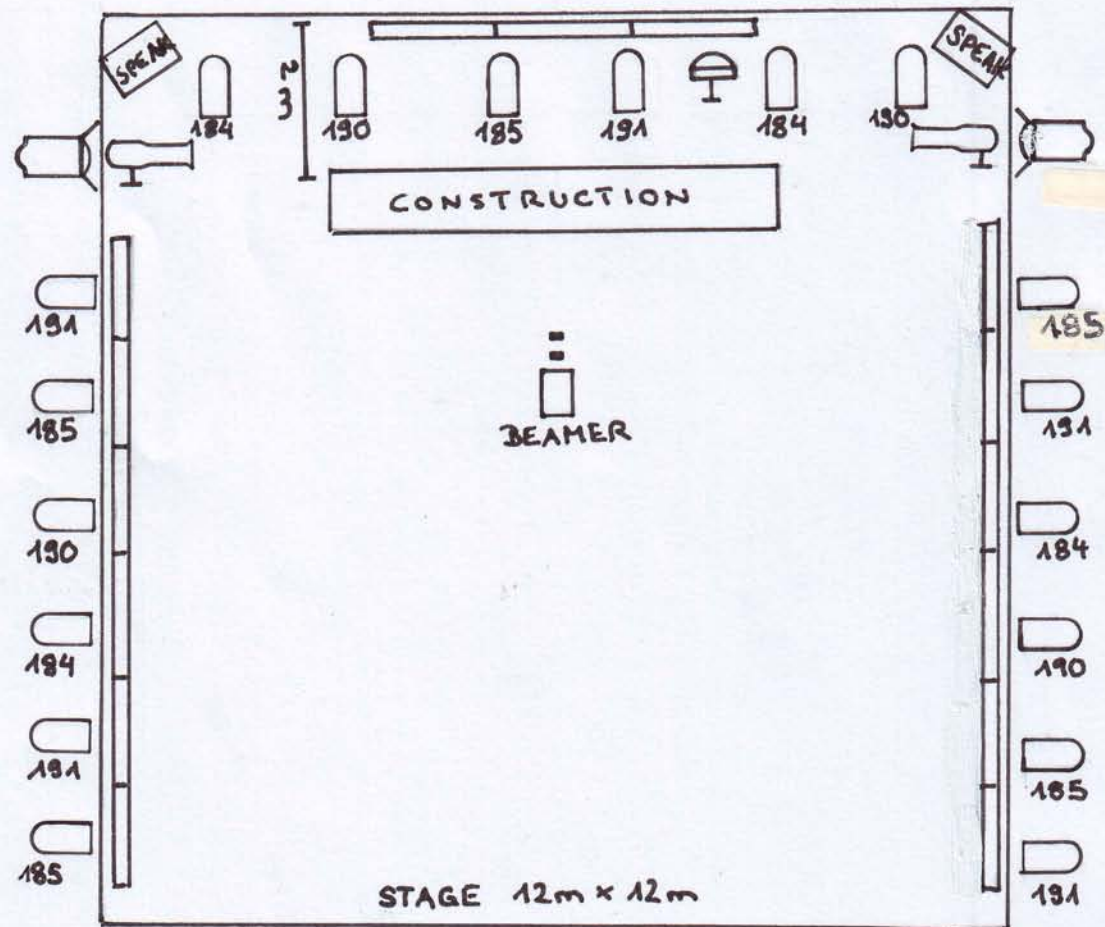
A list of following local medical personel should be available: phisiotherapist, osteopat, orthopedist and general practitioners

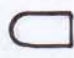


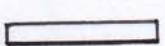

This technical rider and its annexes form an integral part of the contract. Any problems arising have to be discussed with the company. In case of any problem, please let us know in time, so that we can find a solution suitable for both of us.

For further information please contact:

Geni Diez technic 0032 475 569 372  
[genidiez@gmail.com](mailto:genidiez@gmail.com)

(W) arning Carlos Pez



-  24 x 1kw PARS 64 CP62
-  12 x 1kw PC + BARNDOORS
-  2 x 1kw ZOOPROFILE 15° - 38° / FLOORSTAND
-  15 x TL + WARM WHITE
-  DISCOBALL

FILTERS	6 x LEE 184 PARS	5 x LEE 206 PC
	6 x LEE 185 PARS	15 x LEE 208 TL's
	6 x LEE 190 PARS	
	6 x LEE 191 PARS	